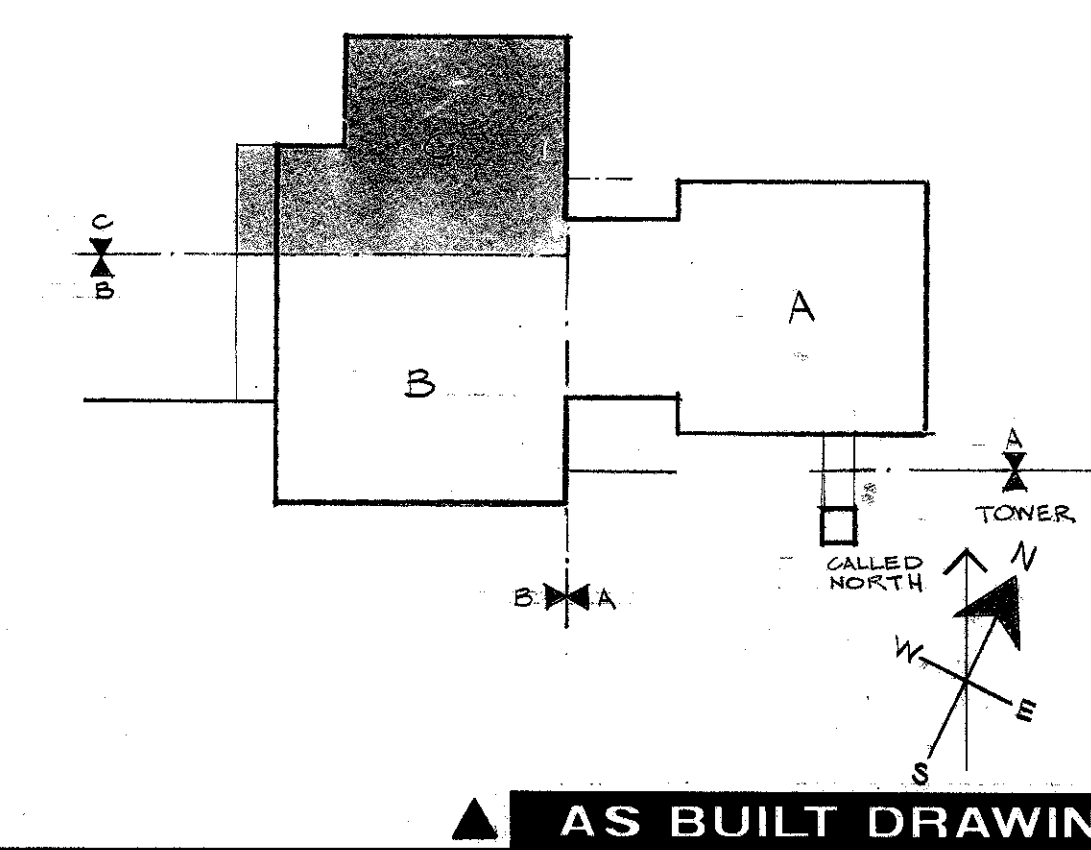


SECOND FLOOR PLAN AREA "C"
SCALE: 1/8" = 1'-0"
SEE TYPICAL FACULTY OFFICE LAYOUT ON SHT. A.59

WALL RAIL LEGEND
3'-10" LENGTH OF RAILS
NUMBER OF RAILS DEFS. IS 19 & 20
(INCLUDES 2 CHAIR TYPED RAILS & ONE CHAIR RAIL)
C-5 LENGTH OF RAIL
CHAIR RAIL DET. 20
T= TACKBOARD
M-8 LENGTH OF RAIL
MAP RAIL DET. 21
SEE RAIL DETAILS ON SHT. A.54
SEE TYPICAL CLASS ROOM PLAN ON SHT. A.54

LEGEND OF WALL SYMBOLS
CONCRETE
PART TYPE #1, UP TO STRUCT. SLAB
PARTITION TYPE #2, UP TO CEILING WITH SOUND BARRIER ABOVE
PARTITION TYPE #2, UP TO SUSPENDED CEILING
PARTITION TYPE #3
PART TYPE #1, UP TO SUSP. CLG.
FOR INTERIOR PARTITION SEE SHT. A.4
W WHITE WALL FOR PROJECTION



Project Title: THE EVERGREEN STATE COLLEGE WASHINGTON OLYMPIA THE LIBRARY BUILDING

State Job No.: 60-018
Sheet No.: A.13

Prepared by: DURHAM · ANDERSON · FREED ARCHITECTS · AIA
1100 DENNY WAY · SEATTLE, WASHINGTON

Approved: [Signature]
Agency: [Signature]
Job Capt.: [Signature]
Section Head: [Signature]
Agency Director: [Signature]

Revisions:
Item Issue Date
1. [Signature] 10-15-70

Sheet Contents: SECOND FLOOR PLAN AREA "C" 1/8" = 1'-0"

AS BUILT DRAWING